



COMPANY INTRODUCTION

www.lf-t.net

LAKE FUSION
Technologies 

SUMMARY

LFT is a German based international deep tech software and technology company.

LFT's USP are safety relevant environmental perception solutions for vehicle, ground, airborne and stationary applications.

Key shareholder

1. LLHC (owner of SES LLC in Huntsville)
2. Rheinmetall Technology Center
3. Dr. Eckhard Cordes

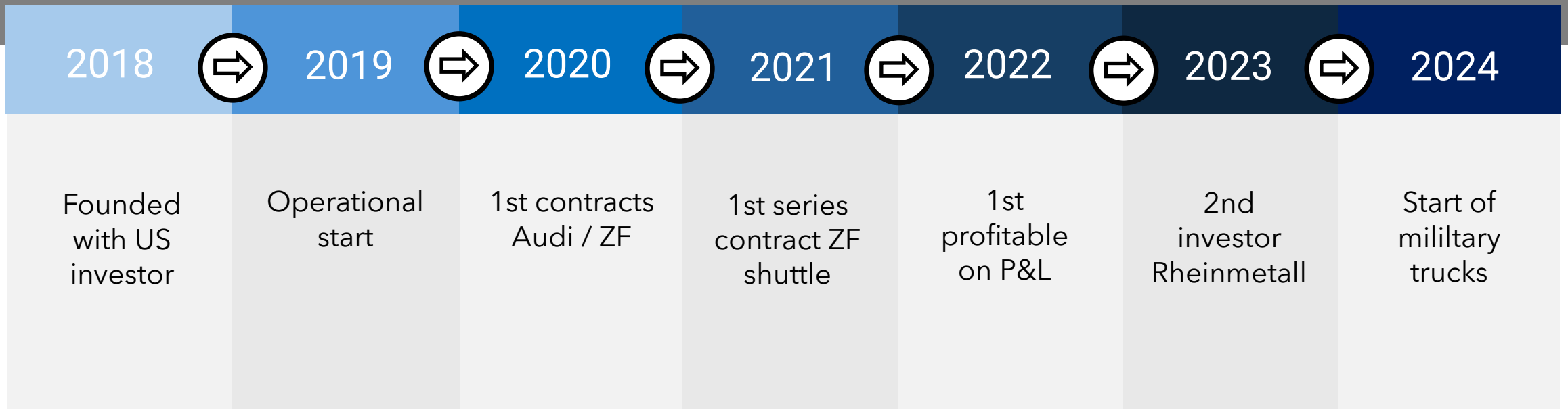
LFT growth strategy includes:

- New environmental perception products for airborne, on road, offroad, sites, maritime and production areas
- Penetrating global markets to expand proven technology into aerospace, automotive, and spin-off solutions for specialty applications

Our Milestones

LFT provides data **FUSION** & processing **Technologies** for Environment perception for autonomous systems

CORE USP: LiDAR rule-based algorithm Safeguard of perception systems



2009 - 2018



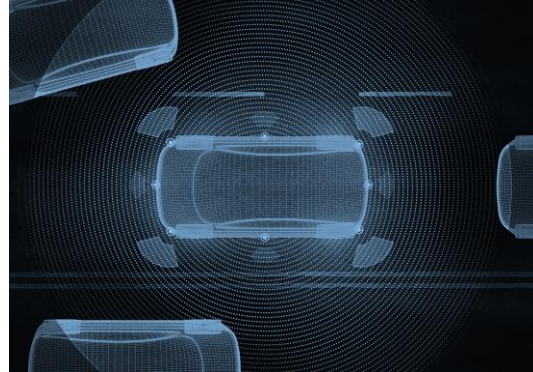
2019



2022



2024



Background

Automotive

Airborne

Security

Aviation
with a long substantial
experience
in **LiDAR**

Safeguard of environmental
perception
for AD systems - **Safeguard
AI**

**Laser-based-Situational
awareness**
around the helicopters

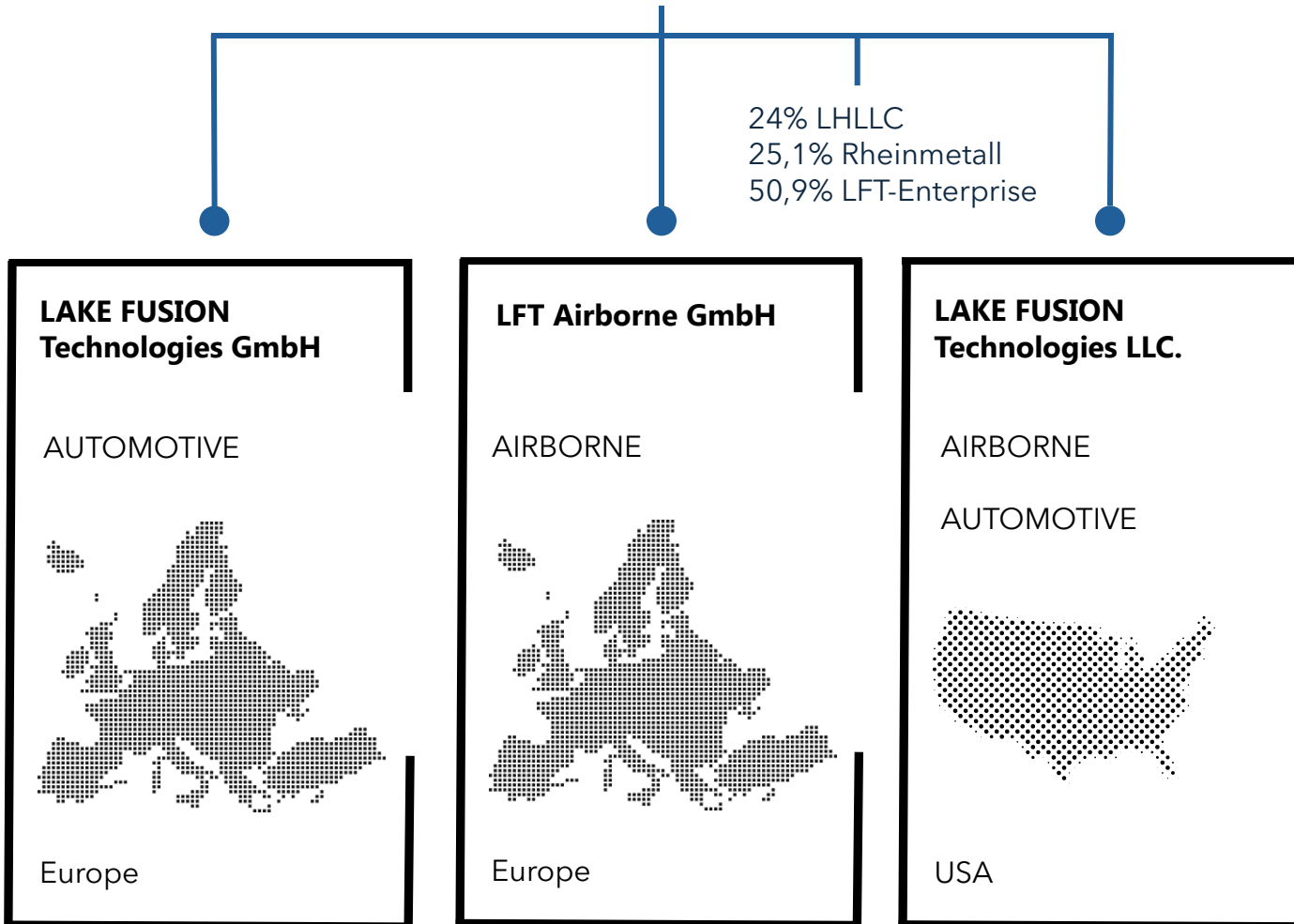
Object detection high reliable
environmental
recognition

Story About Us

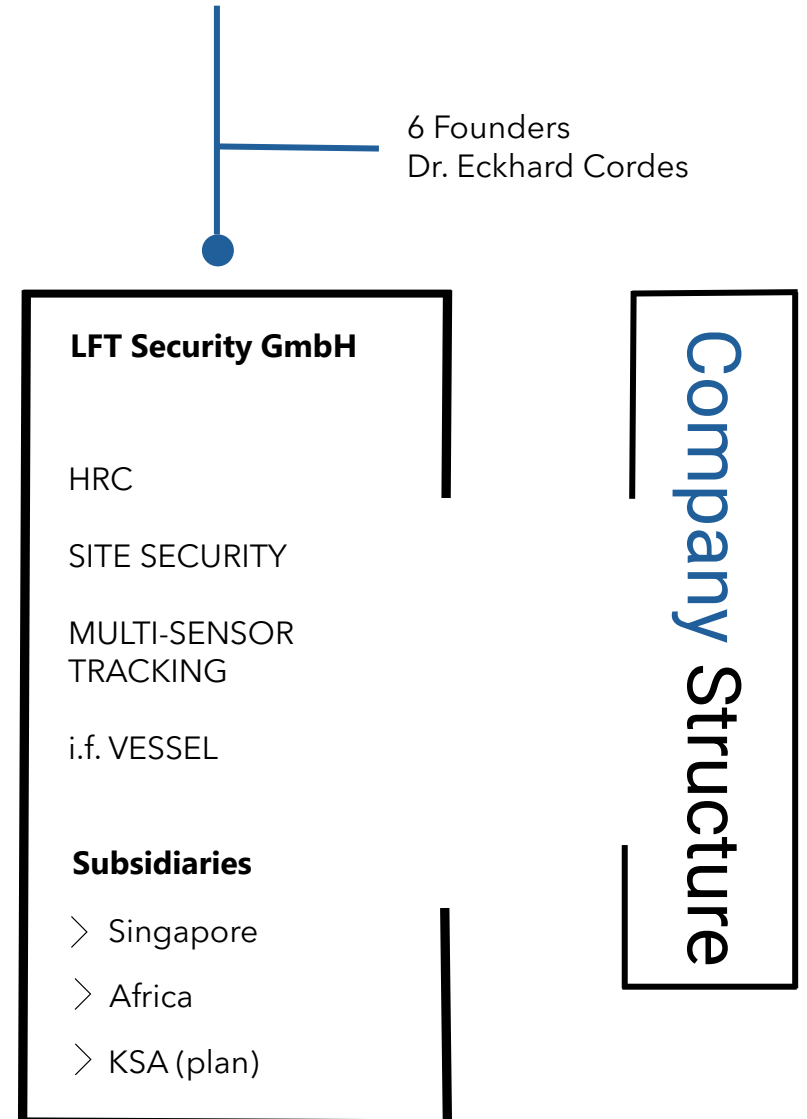
LFT's Locations

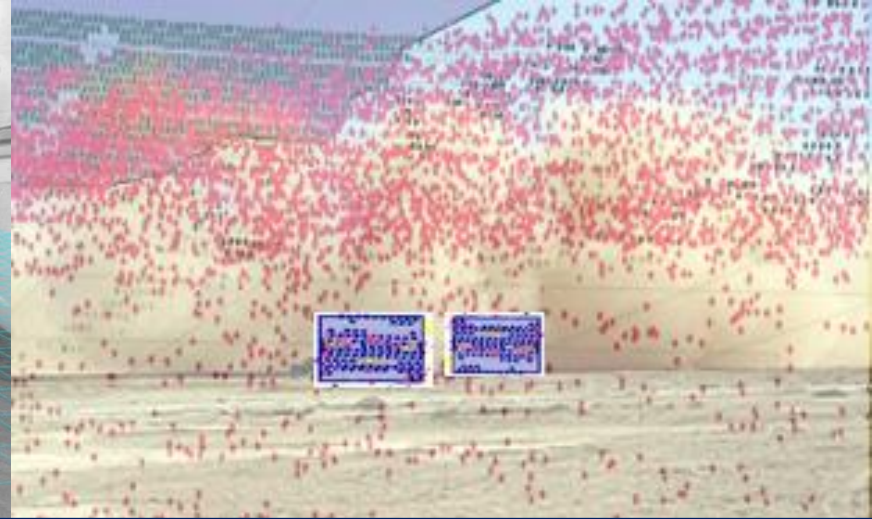
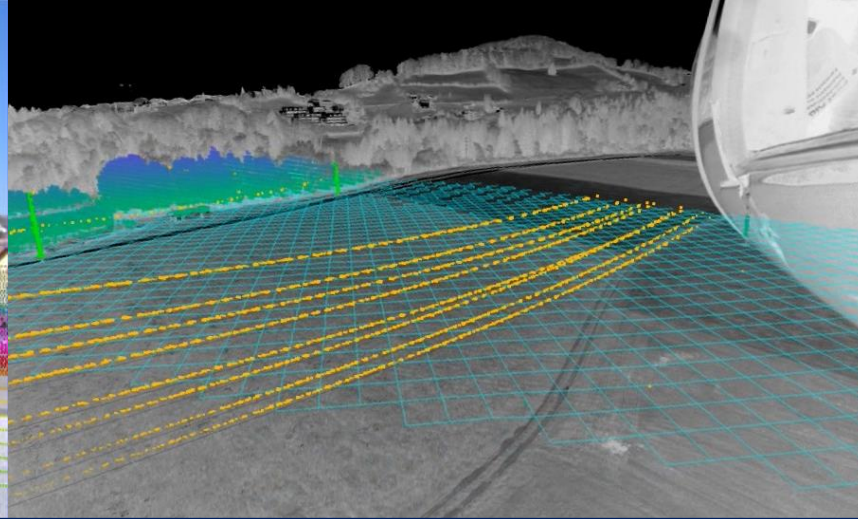
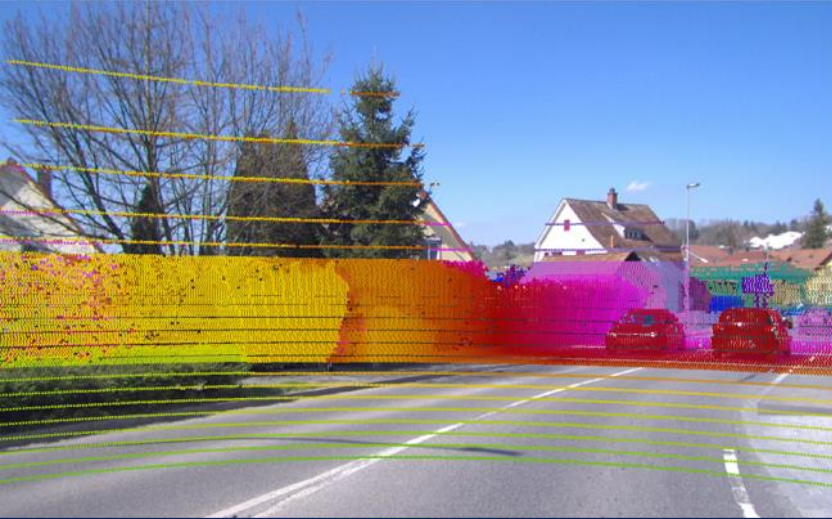


LFT Holding GmbH



LFT Enterprise GmbH





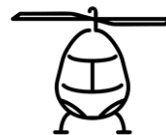
What We Do

LiDAR based safety-critical environmental perception



Ground Vehicle

Autonomous driving onroad / offroad



Airborne

Pilot assistance for obstacle detection (Helicopter / Drone)



Security

Object detection high reliable environmental recognition

Our Service



LiDAR validation

LFT.....

-----BITTE-----

----VERVOLLSTÄNDIGEN----



Safety consulting

LFT provides safety-critical ASIL-approved environment detection software with the focus on LiDAR sensors



Reference measurements

LFT

-----BITTE-----

----VERVOLLSTÄNDIGEN----

Our Values



Quality

LFT provides ongoing consistency checks:

.....



Mission

LFT -----
.....



Innovation

LFT -----
.....

A network diagram with glowing blue nodes and connecting lines on a dark blue background.

Cooperation Partners Airborne



A network diagram with glowing blue nodes and connecting lines on a dark blue background. The nodes are arranged in a complex, interconnected pattern, with some nodes being brighter than others. The lines are thin and light blue, creating a web-like structure.

Customer Contracts

GROUND VEHICLE – SAFEGUARD OF AI

Autonomous driving in public road traffic



Is AI safe enough?

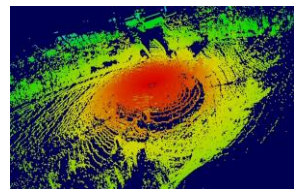
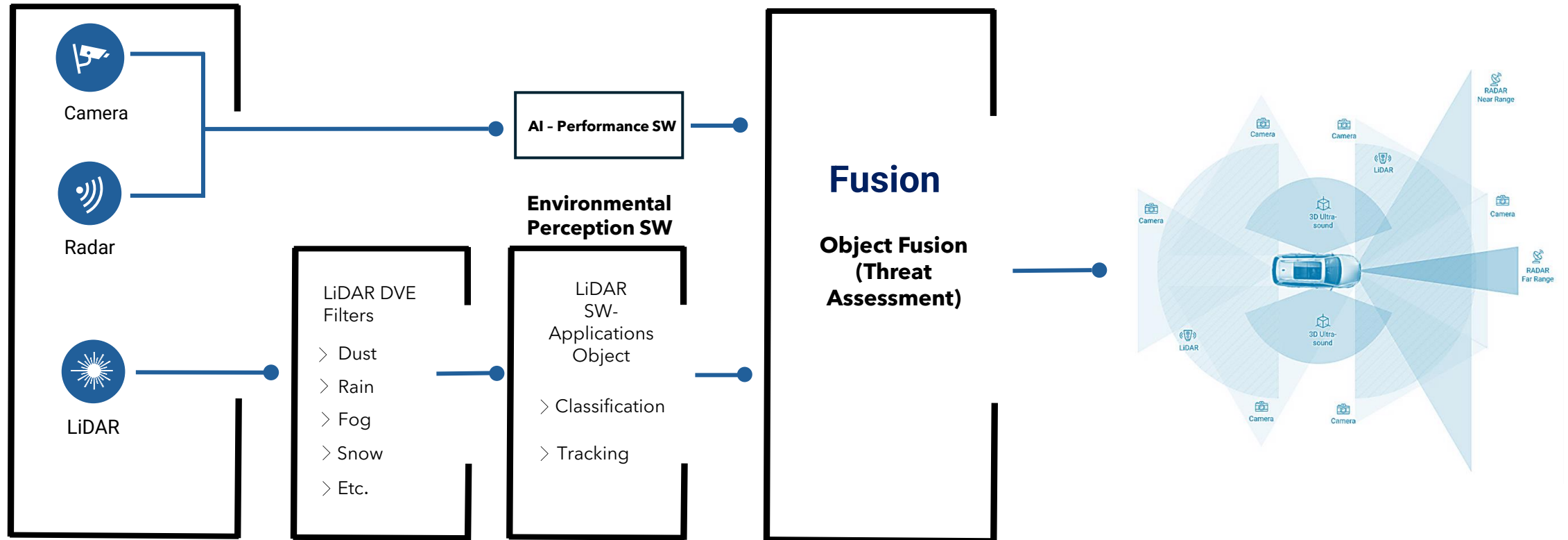
Safe environmental perception is required!



LFT's Solution _____

- Multimodal sensor suite and safety monitoring is a prerequisite for a complete provision of the „intended function“.
(e.g. autonomous driving)
- Fusion processes are required for the functional safeguarding.

Our Safety KIT



Safety KIT Video



LiDAR Validation

**More than 93 LiDAR sensors
are already tested**

In real world scenarios

- > Integration of LiDAR-Under-Test on LFT reference system
- > Recording and analysis of typical scenarios under different ambient conditions sun, rain, snow
- > **Qualitative evaluation** of detection ranges, intensities, noise levels, artefacts, homogeneity, bloomig, ghost images etc.
- > **Comparison to reference** LiDARs operating at 905 nm and 1550 nm

- > Calibrated reference targets, flat, spatially structured, mixed reflectivities, mesh fence, etc.

- > **Qualitative evaluation** of detection ranges, intensities, noise levels, resolution, homogeneity **over FoV**

In defined conditions